



The Gamma Ray Science Interest Group

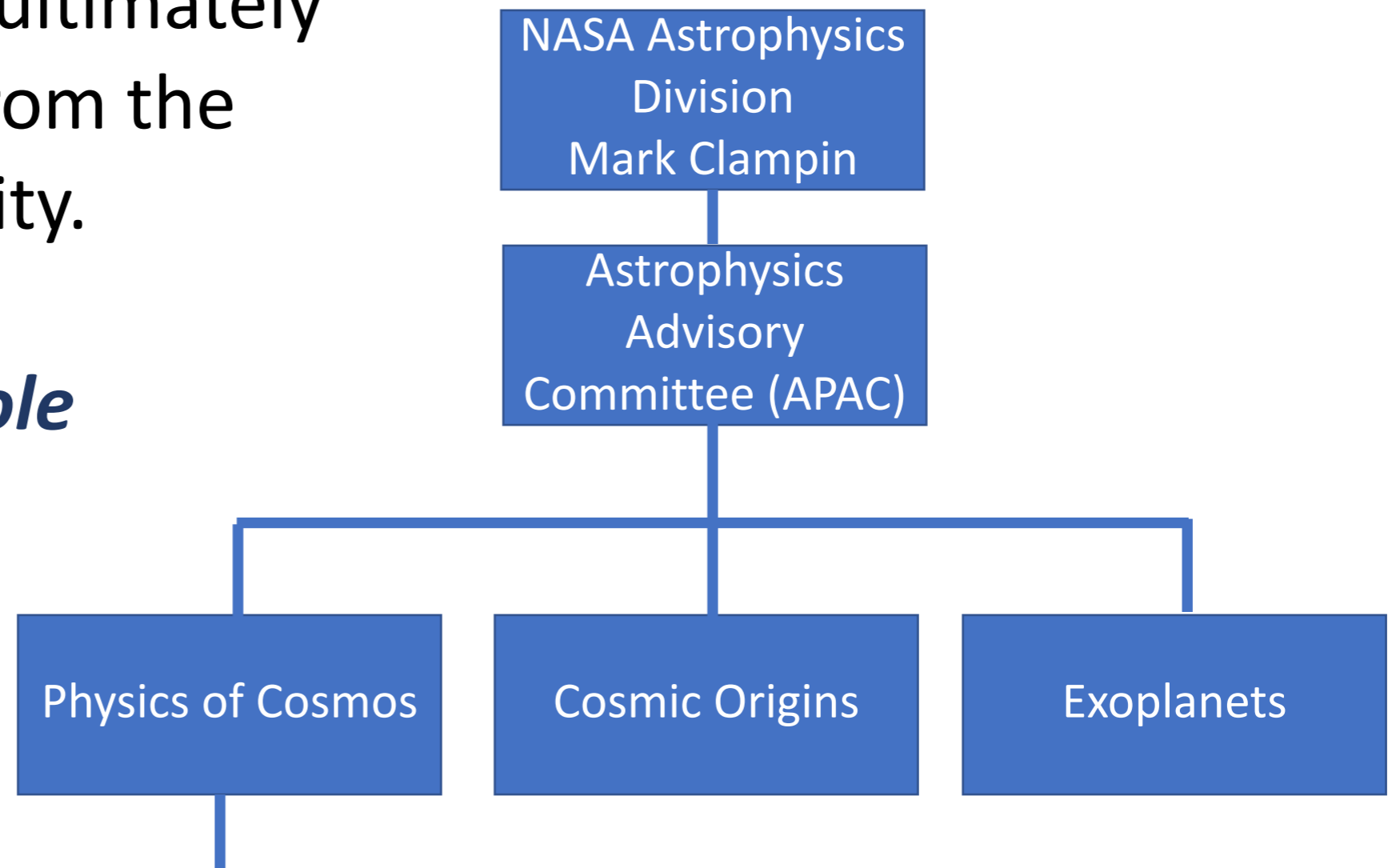
GRSIG chairs: Justin Finke (NRL), Jeremy Perkins (NASA-GSFC),
Manel Errando (Washington University in Saint Louis)

Physics of the Cosmos Program Analysis Group (PhysPAG)



Provide APAC and ultimately NASA with input from the scientific community.

Membership: *whole community!*



Science Interest Groups (SIGs) – permanent discipline-specific groups

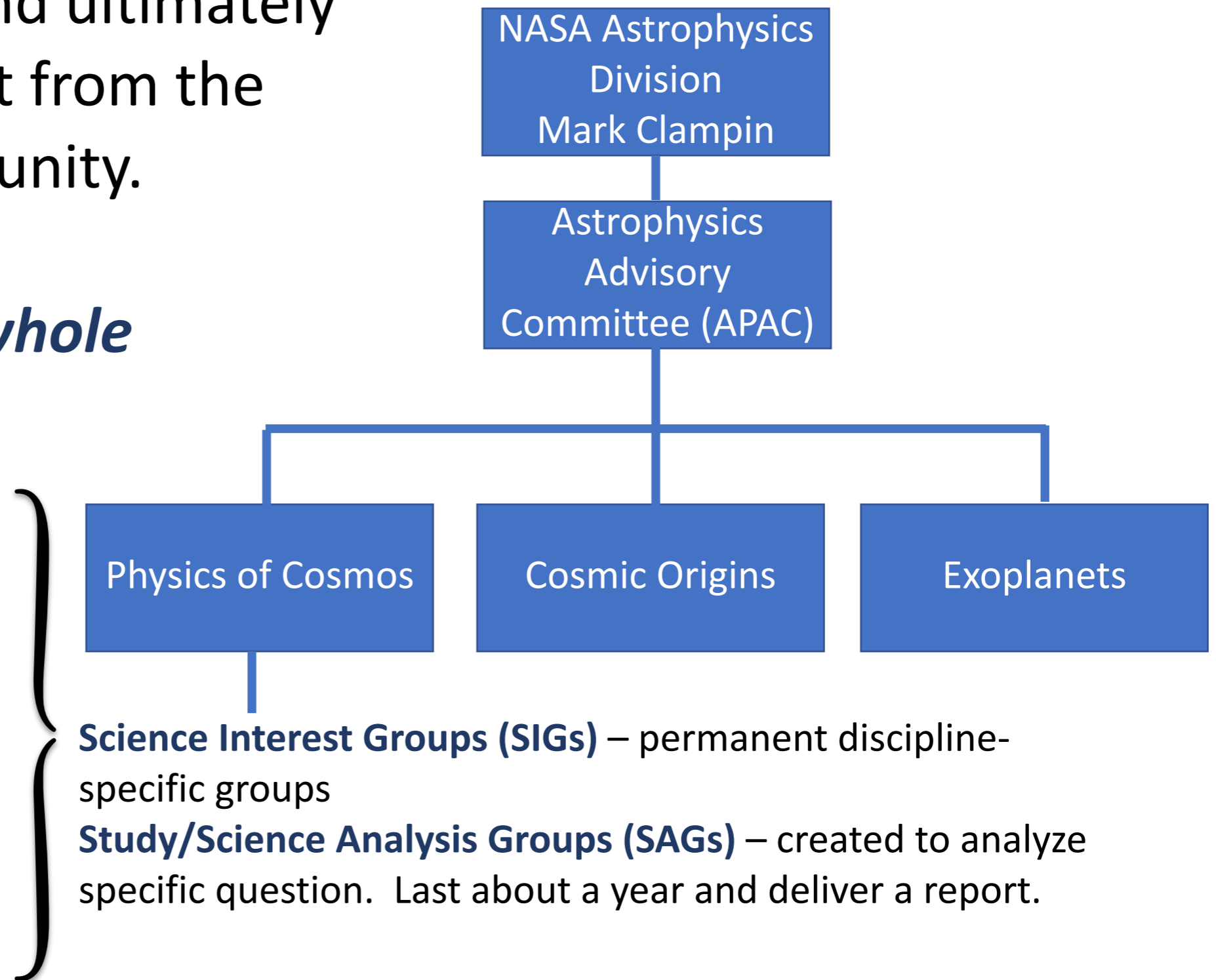
Study/Science Analysis Groups (SAGs) – created to analyze specific question. Last about a year and deliver a report.

Physics of the Cosmos Program Analysis Group (PhysPAG)



Provide APAC and ultimately NASA with input from the scientific community.

Membership: *whole community!*



Physics of the Cosmos Program Analysis Group (PhysPAG)



Provide APAC and ultimately NASA with input from the scientific community.

Membership: *whole community!*

NASA Astrophysics Division
Mark Clampin

Astrophysics Advisory Committee (APAC)

Physics of Cosmos

Cosmic Origins

Exoplanets

Cosmic Ray
Cosmic Structure
Gamma Ray
Gravitational Waves
Inflation Probe
Time Domain and Multimessenger
X-ray

Science Interest Groups (SIGs) – permanent discipline-specific groups

Study/Science Analysis Groups (SAGs) – created to analyze specific question. Last about a year and deliver a report.

Gamma Ray SIG (GR-SIG)

- Goal is to coordinate community activities and preparations for future gamma-ray missions.
- Activities:
 - Organize sessions at AAS / APS / HEAD / SPIE meetings.
 - Organize monthly webinars to highlight gamma-ray science results and stimulate community discussion.
 - Launch SAGs (Science Analysis Groups) which are time-constrained taskforces with the goal of providing findings that can influence NASA policy.

Gamma Ray SIG (GR-SIG)

- Goal is to coordinate community activities and preparations for future gamma-ray missions.
- Activities:
 - Organize sessions at AAS / APS / HEAD / SPIE meetings.
 - Organize monthly webinars to highlight gamma-ray science results and stimulate community discussion.
 - Launch SAGs (Science Analysis Groups) which are time-constrained taskforces with the goal of providing findings that can influence NASA policy.

Join the GRSIG mailing list
Participate in our monthly
meetings

